

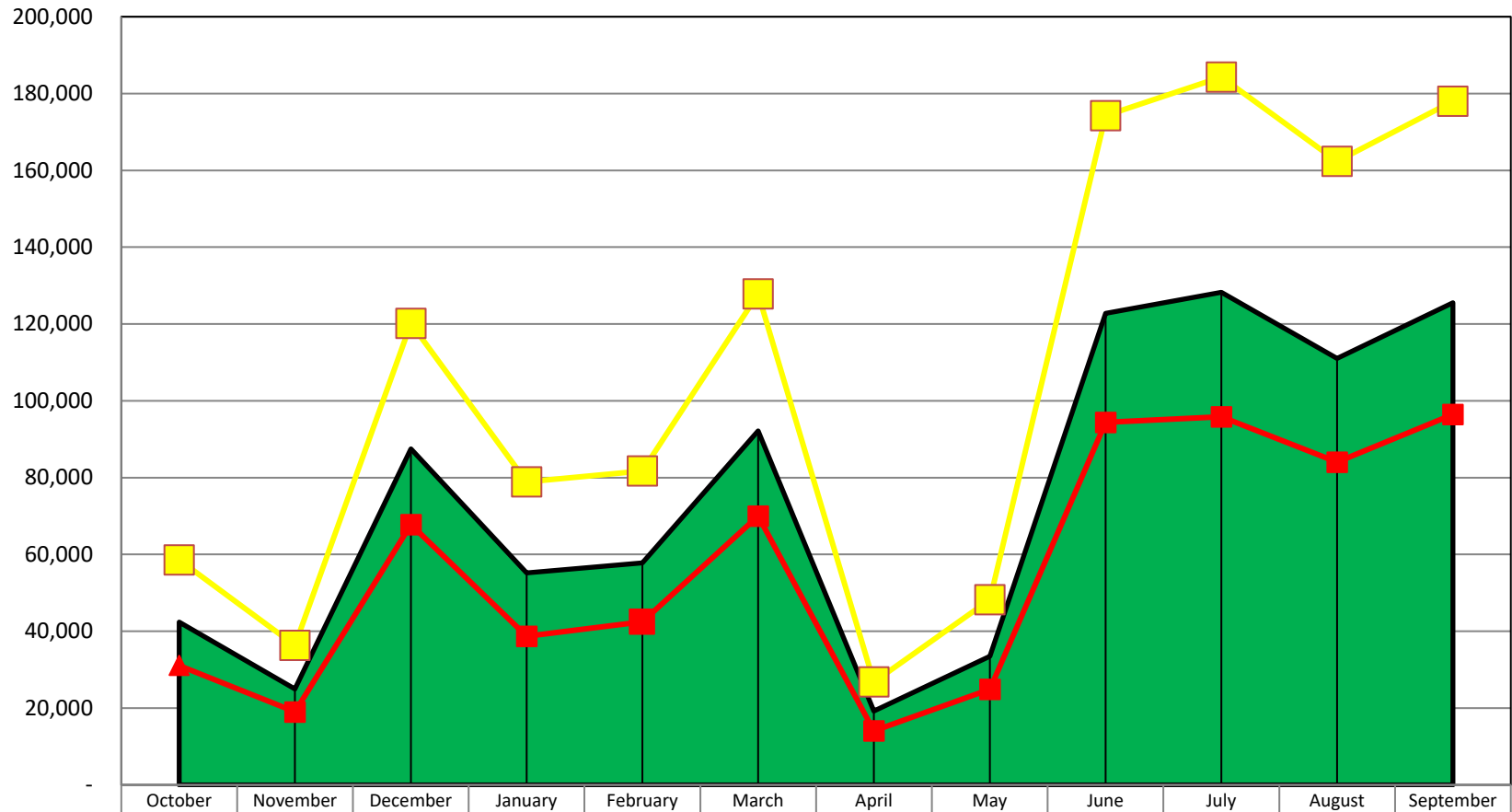
## LODGING LOT ACTUAL PERCENTAGES AND FORECASTED DOLLARS

Month	FY20	FY21	FY22	FY23	FY24	Five year average	FY25 Budget dollars	FY25 Budget + Contingent dollars	FY25 actual and forecast based on trend	Percentage +/- based on budget	Actual total	Budget total	total +/- YTD	
October	4.41%	4.40%	5.14%	5.28%	4.95%	4.84%	41,310	41,310	31,068	-24.79%	31,068	41,310	-24.79%	
November	2.93%	2.66%	2.86%	3.01%	2.80%	2.85%	25,650	25,650	19,034	-25.79%				
December	8.68%	8.98%	10.10%	11.73%	10.58%	10.01%	84,690	84,690	67,793	-19.95%				
							<b>1st Quarter Total</b>	<b>151,650</b>	<b>151,650</b>	<b>117,895</b>	<b>-22.26%</b>			
January	6.84%	5.23%	5.66%	6.02%	4.83%	5.72%	55,620	55,620	38,692	-30.43%				
February	6.08%	5.93%	6.66%	6.77%	5.92%	6.27%	57,600	57,600	42,459	-26.29%				
March	6.02%	11.73%	12.02%	11.09%	10.84%	10.34%	90,090	90,090	70,019	-22.28%				
							<b>2nd Quarter Total</b>	<b>203,310</b>	<b>203,310</b>	<b>151,170</b>	<b>-25.65%</b>			
April	0.51%	2.65%	2.54%	2.33%	2.36%	2.08%	18,900	18,900	14,062	-25.60%				
May	2.72%	4.23%	3.79%	3.84%	3.81%	3.68%	33,930	33,930	24,897	-26.62%				
June	12.95%	14.43%	13.82%	13.92%	14.60%	13.94%	122,760	122,760	94,394	-23.11%				
							<b>3rd Quarter Total</b>	<b>175,590</b>	<b>175,590</b>	<b>133,352</b>	<b>-24.05%</b>			
July	15.37%	13.07%	14.80%	13.89%	13.68%	14.16%	129,870	129,870	95,874	-26.18%				
August	14.51%	12.14%	12.99%	10.79%	11.65%	12.41%	114,390	114,390	84,045	-26.53%				
September	15.46%	13.13%	14.02%	14.64%	13.98%	14.25%	125,370	125,370	96,456	-23.06%				
							<b>4th Quarter Total</b>	<b>369,630</b>	<b>369,630</b>	<b>276,375</b>	<b>-25.23%</b>			
Total	96.47%	98.57%	100.00%	100.00%	100.00%	100.00%	900,180	900,180	678,792	<b>75.21%</b>				
							900,180	900,180						

Year to date the actual revenues received for FY25 are 33.73% under the year to date revenues for FY25 and 31.97% over the 5 year average year to date.

27-Nov-24

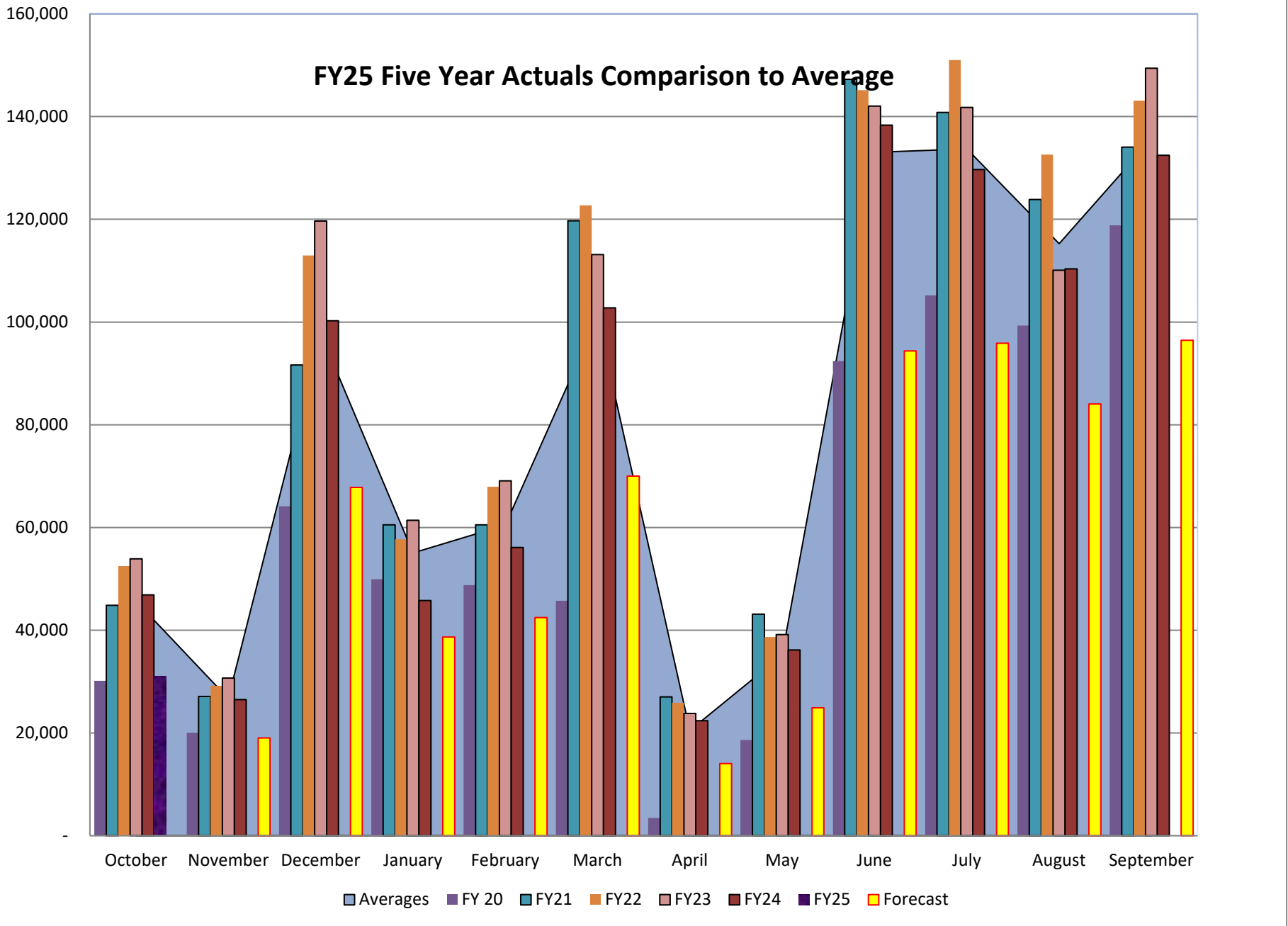
## LOT FiveYear Average Compared to FY25 Actual



	October	November	December	January	February	March	April	May	June	July	August	September
<span style="color: green;">■</span> Average	42,391	25,005	87,502	55,169	57,777	92,158	19,232	33,477	122,803	128,253	111,044	125,503
<span style="color: yellow;">■</span> Budget	58,613	36,355	120,195	78,904	81,775	127,816	26,789	48,195	174,211	184,300	162,351	177,979
<span style="color: red;">▲</span> FY25 Actual	31,068	-	-	-	-	-	-	-	-	-	-	-
<span style="color: red;">■</span> Forecast	31,068	19,034	67,793	38,692	42,459	70,019	14,062	24,897	94,394	95,874	84,045	96,456

■ Average   
 ■ Budget   
 ▲ FY25 Actual   
 ■ Forecast

### FY25 Five Year Actuals Comparison to Average



**LOT Actual Dollars per Month**

Month	FY06	FY07	FY08	FY09	FY10	FY11	FY12	FY13	FY14	FY15	FY16	FY17	FY18	FY19	FY20	FY21	FY22	FY23	FY24	FY25	Totals
October	14,274	16,938	14,412	11,306	10,483	11,520	12,392	12,163	13,390	19,298	22,085	25,791	27,291	30,504	30,166	44,871	52,496	53,920	46,884	31,068	501,253
November	11,272	9,748	7,978	7,147	5,850	5,535	6,103	7,298	8,233	11,738	12,986	15,209	16,795	17,929	20,073	27,132	29,184	30,705	26,514		277,429
December	18,547	21,746	22,261	16,224	14,294	15,459	13,939	19,101	18,122	21,802	31,168	32,785	33,179	49,031	64,163	91,656	112,975	119,687	100,248		816,387
January	17,232	18,707	20,163	17,932	17,007	17,510	17,065	19,334	24,733	26,778	31,157	31,506	40,724	46,286	49,923	60,516	57,714	61,406	45,800		621,493
February	20,446	22,943	27,324	24,826	18,873	19,921	19,716	22,331	22,013	28,487	32,613	35,777	38,616	42,579	48,770	60,544	67,925	69,067	56,112		678,883
March	15,110	13,668	21,527	15,969	8,925	11,941	17,344	20,251	19,365	18,422	23,712	25,885	31,339	59,451	45,755	119,721	122,712	113,152	102,771		807,021
April	7,294	8,049	6,425	5,954	6,183	6,210	6,696	6,165	8,719	11,641	15,255	14,865	15,617	15,981	3,460	27,021	25,895	23,801	22,387		237,618
May	11,994	11,230	9,368	8,595	7,335	8,074	9,461	11,113	15,390	18,711	22,047	23,315	25,265	27,806	18,644	43,132	38,658	39,144	36,141		385,423
June	23,442	24,611	25,426	22,248	21,491	20,728	25,352	33,681	37,000	42,541	50,323	55,034	58,523	87,224	92,394	147,239	145,130	142,028	138,342		1,192,757
July	47,654	54,276	47,052	42,408	48,747	49,843	54,214	62,187	65,335	71,296	82,520	88,713	102,486	102,472	105,196	140,826	150,998	141,774	129,663		1,587,660
August	44,024	52,948	41,089	32,480	39,398	44,505	48,919	57,546	64,959	63,598	71,300	81,215	89,143	89,369	99,323	123,848	132,577	110,103	110,375		1,396,719
September	26,973	26,073	23,600	25,826	20,258	27,603	33,029	35,605	35,959	49,346	53,966	57,591	84,328	82,112	118,823	134,036	143,595	149,427	132,448		1,260,598
<b>Total Dollars Received</b>	<b>258,263</b>	<b>280,937</b>	<b>266,627</b>	<b>230,991</b>	<b>218,844</b>	<b>238,849</b>	<b>260,743</b>	<b>306,775</b>	<b>333,218</b>	<b>383,658</b>	<b>449,132</b>	<b>487,686</b>	<b>563,306</b>	<b>650,744</b>	<b>696,690</b>	<b>1,020,542</b>	<b>1,079,859</b>	<b>1,054,214</b>	<b>947,685</b>		<b>9,728,762</b>
Difference compared to prior year		22,674	(14,310)	(35,635)	(12,148)	20,005	21,894	46,032	26,443	50,440	65,474	38,554	75,620	87,438	45,946	323,852	59,317	(25,645)	(106,529)	(947,685)	
Percent of change		9%	-5%	-13%	-5%	9%	9%	18%	9%	15%	17%	9%	16%	16%	7%	46%	6%	-2%	-10%	-100%	
Budgeted Dollars	237,858	255,550	309,125	300,000	225,000	175,000	227,500	240,440	255,859	279,620	349,520	400,710	509,131	515,000	712,249	650,866	766,000	1,200,000	1,277,500	900,000	7,609,428
Contingent Budgeted dollars						52,500	62,543	11,920	50,000	61,315	77,500	45,000	27,090	161,706	327,290	256,790	227,791	360,000	150,000	0	1,721,445
2nd Contingent Budgeted Dollars								38,600	43,000												81,600
<b>Total Budgeted</b>	<b>237,858</b>	<b>255,550</b>	<b>309,125</b>	<b>300,000</b>	<b>225,000</b>	<b>227,500</b>	<b>290,043</b>	<b>290,960</b>	<b>348,859</b>	<b>340,935</b>	<b>427,020</b>	<b>445,710</b>	<b>536,221</b>	<b>676,706</b>	<b>1,039,539</b>	<b>907,656</b>	<b>993,791</b>	<b>1,262,461</b>	<b>1,427,500</b>		<b>9,114,934</b>